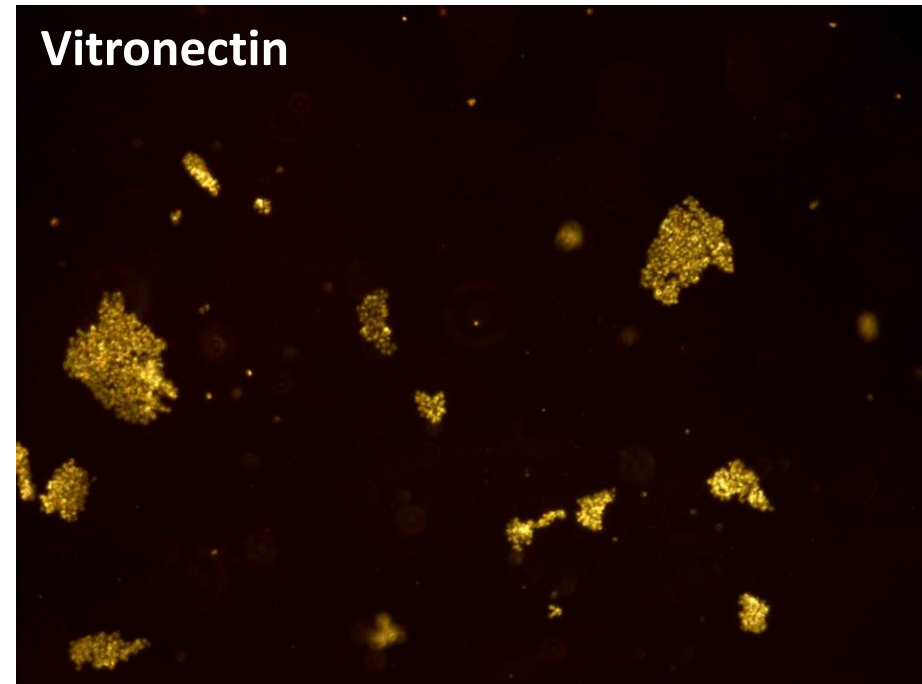
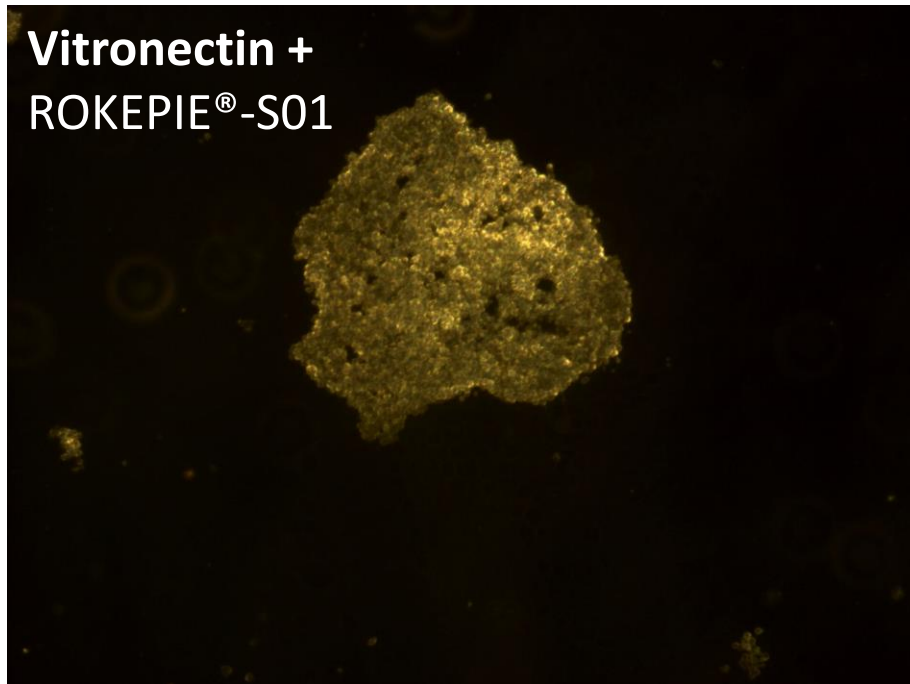


Storage of HUES9 cells at 2 – 8°C for 7 days

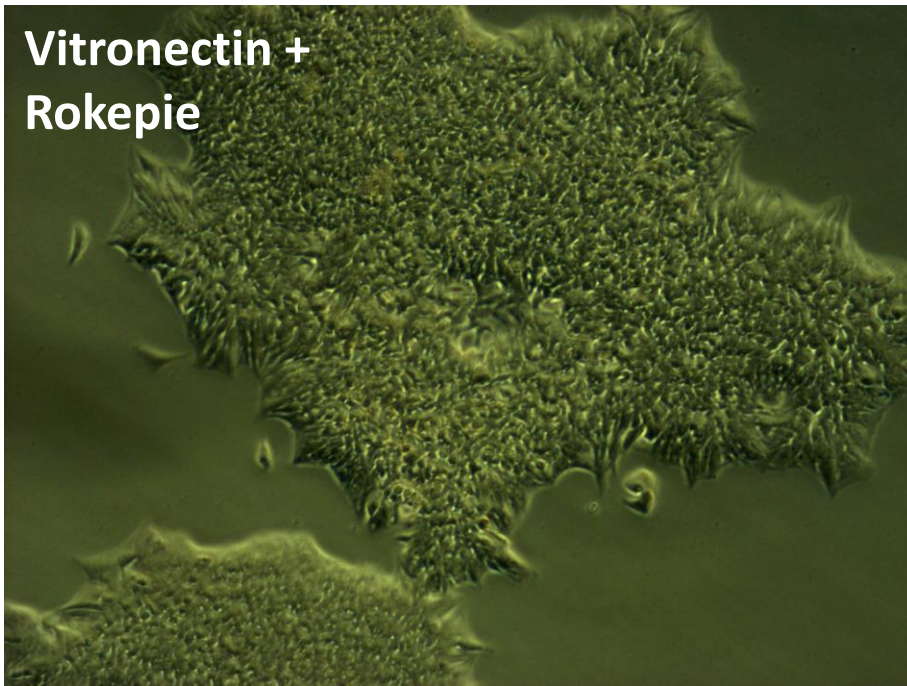
Effect of ROKEPIE[®]-S01 on morphology and colony formation after storage.



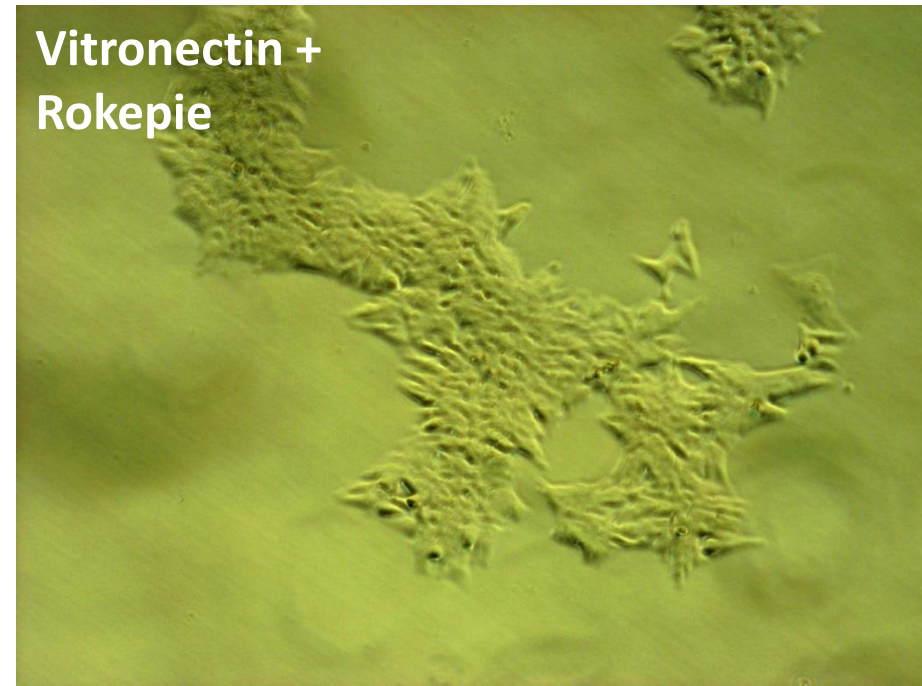
- Vitronectin coated plates with ES cells with ROKEPIE®-S01 show similar morphology to ES cells during passaging
- Cells that were not treated with ROKEPIE®-S01 float and small cell bodies are indicative of cell death

DAY 0 (after 7
day storage at
2 – 8°C)

**Vitronectin +
Rokepie**



**Vitronectin +
Rokepie**

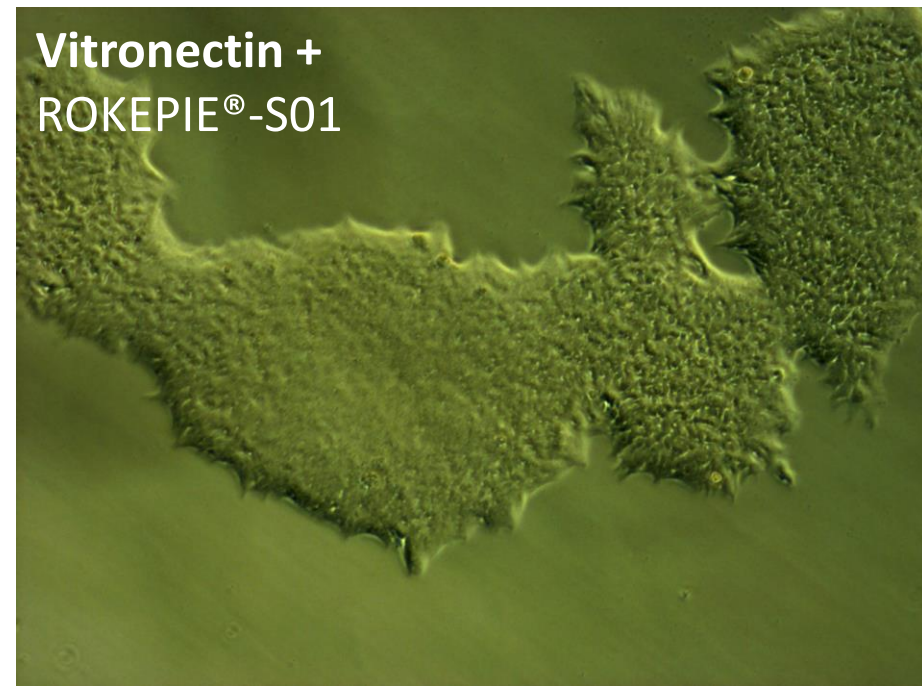


- Vitronectin coated plates with ES cells treated with ROKEPIE®-S01 begin to show morphology similar to ES cells begin to form normal colonies

**Vitronectin +
Rokepie**



DAY 3 (after 7
day storage at
2 – 8°C)



- Vitronectin coated plates with ES cells treated with ROKEPIE®-S01 begin show completely normal ES cell morphology
- No colony formation or cell attachment is observed in ES cells that were stored without ROKEPIE®-S01

DAY 5 (after 7
day storage at
2 – 8°C)